

# SmartWall

## The camera that looks people in the eye

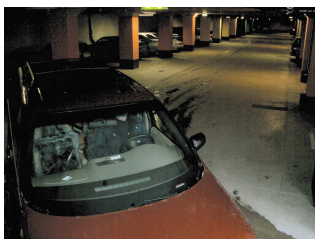
SmartWall shields the camera from view so that it can be placed where the best image can be captured. Fully flexible height, direction and degree of enlargement mean that you can capture an image for identification purposes in accordance with current recommendations – even at a distance.

See the pictures below for the difference in image between a camera placed high up and one placed at eye level.

In SmartWall you can monitor an area using analogue system cameras, mini-cameras or IP cameras. Existing cameras can also be placed in a SmartWall system.

In SmartWall one or more cameras can be accommodated for ultimate identification in different directions. The product blends in easily with different surroundings, providing a subtle surveillance solution.

Don't look down at people – look them in the eye.



*Traditional placement:  
camera height 2.5 m*



*SmartWall:  
camera height 1.0 m*



*Traditional placement:  
camera height 2.5 m*



*SmartWall:  
camera height 1.6 m*

## Camera Device Option AXIS box- and mini cameras

Image Device  
Angle of view  
Product colour  
Product material  
Horizontal Resolution  
Power over Ethernet  
(IEEE 802.3af)

1/3" Micron Progressive Scan RGB CMOS  
Options between c:a 85° -18°  
White, Red or Black (or on demand)  
Metal  
IP (640x480) MegaPixel 1,3  
Built in